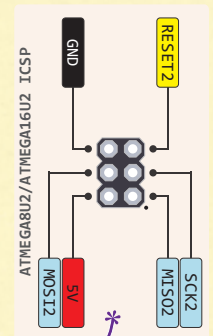
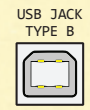
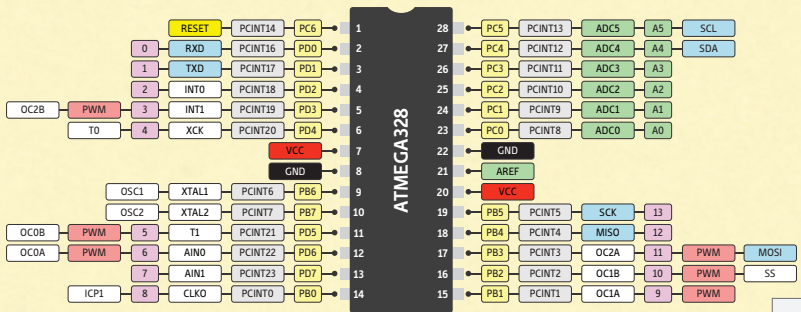
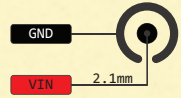


THE DEFINITIVE ARDUINO UNO PINOUT DIAGRAM

- ⚠ Absolute max per pin 40mA recommended 20mA
- ⚡ Absolute max 200mA for entire package

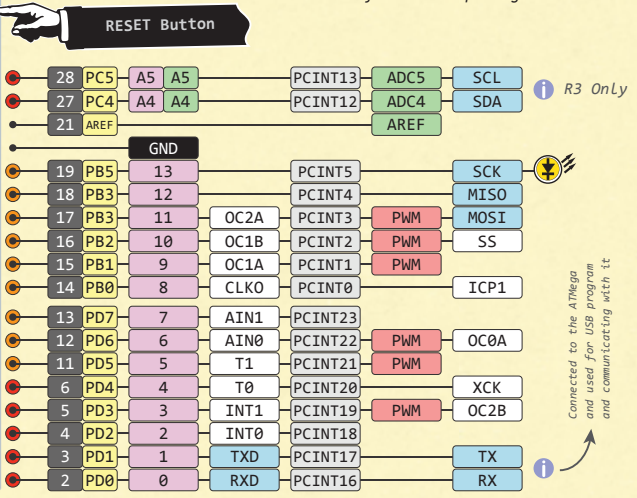
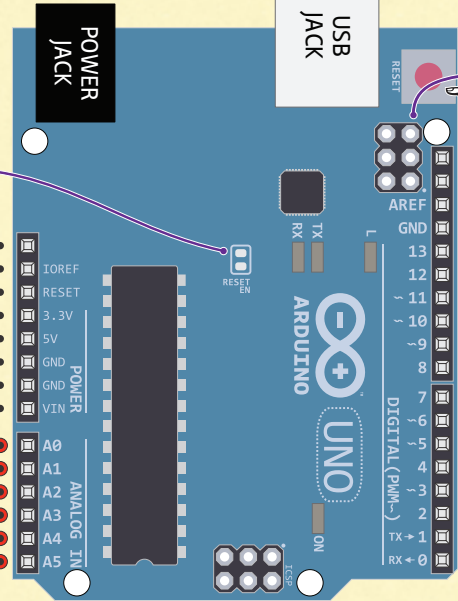
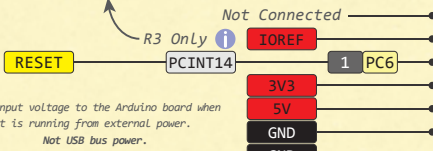


7-12V Depending on current draw



Cut to disable the auto-reset

This provides a Logic reference voltage for shields that use it. It is connected to the 5V bus.



R3 Only



Connected to the ATmega and used for USB program and communicating with it

- GND
- Power
- Control
- Physical Pin
- Port Pin
- Pin Function
- Digital Pin
- Analog Related Pin
- PWM Pin
- Serial Pin
- IDE
- Source Total 150mA



www.pighixx.com



18 FEB 2013

ver 2 rev 1 - 05.03.2013

